



SIBELIUSTALO

# MAIN HALL VENUE INFORMATION



# SIBELIUS HALL

Congress- and concert center Sibelius Hall  
Ankkurikatu 7, 15140 Lahti

## MAIN HALL SIZE

In total 1100 / 1229 seats:

- \* lower parquet 382 / high parquet 268 (including 12 disabled seats)
- \* box: 18 (in total 668)
- \* balcony: 247
- \* 2. parquet: 185
- \* organ balcony: 129 (not for sale for PA- concerts)

Hall sizes: 51m x 36 m x 22 m.

Auditorium and the stage with balconies are in oval shape in to so called "shoebox hall".

## ACOUSTICS

The American Russel Johnson and Artec Consultants Inc. have been responsible for the design of the house's acoustics Hall's shoebox shape and the oval shaped audience- and performing space inside it is an optimal acoustic solution. Auditorium and the stage with balconies are in oval shape in to so called "shoebox hall". The adjustable acoustics consist of a canopy above the performance stage, which can be raised and lowered, from the 188 acoustic doors on the sides of the hall, opening into the echo chambers, and from the woolen curtains (2,7 km). The grooved wall surface of the hall disperses reflected sounds.

The British newspaper The Guardian listed in 2015 world's ten best concert halls, and Sibelius Hall was chosen among them. Trevor Cox of The Guardian, who is Professor of Acoustic Design at the University of Salford, praises the wooden ensemble of the Sibelius Hall. Also the American The Wall Street journalist introduced Europe's five best concert halls, and one of them was Sibelius Hall in Lahti. The magazine describes the great acoustic reputation of the Main Hall of the Sibelius Hall as coming from its adaptability, which allows many different styles of music to be performed in the hall.

## ORGAN

Builder: Grönlunds Orgelbyggeri AB, Luulaja / Gammelstad, Sweden 2007

Stylistically French-romantic organ. 52 voiceovers; special effects are bird singing, cymbelstern, tromba, xylophone and rain machine (only one in Finland). The sound of the organ is plush and rich, which is enriched by the hall's excellent acoustics. The organ plays well both with the orchestra and as a solo instrument. Organ can be rented for concert use.

## TICKET SALE INFORMATION

Sibelius Hall's daily ticket sale moves to shopping center TRIO, Lippu.fi point of sale, Aleksanterinkatu 18 A, street level, starting from 1.7.2019. The ticket sales service and purchase advice are available at the number 0600 900 900 from Monday to Saturday at 9-21 o'clock and on Sundays 10-18 o'clock (exceptions possible for example during holidays).

Sibelius Hall ticket office is serving the customers an hour before the event.

Ticket office's logos and graphical instructions:

## OPEN FLAMES & PYROTECHNIC

The use of open flames and pyrotechnics are prohibited in Sibelius Hall.

## SIBELIUS HALL'S MARKETING SUPPORT

Sibelius Hall's event calendar: [www.sibeliustalo.fi](http://www.sibeliustalo.fi) (also Facebook)

Poster board: Sibelius Hall's main entrance.

Recommendation size: A3. Goinfo-event calendar:

<http://ess.menoinfo.fi/>

Take contact to advertise your event in Sibelius Hall channels. Available marketing measures are for example screens at the racks, ticket sale and restaurant, targeted newsletters, banners, repertoire brochure, poster distribution.

**Elina Hankkio**, Marketing- and Communication Director  
p. 040 509 5080

**Ikka Siitari**, Marketing Planner  
p. 044 416 3184

Emails are in form of [firstname.lastname@eventumahti.fi](mailto:firstname.lastname@eventumahti.fi)

## MEDIA IN LAHTI AREA

Hämeen Media Oy:

- Etelä-Suomen Sanomat: main newspaper in the area, newspapers, and webs overall reach 217 000
- Itä-Häme: regional newspaper Heinola, Hartola, Sysmä: newspapers and webs overall reach 29 000
- Mobile and tablet: [ess.fi-digilehti](http://ess.fi-digilehti)
- Digital outside- and business advertising: for example, city boards.
- Radios: Radio Voima and Iskelmä Lahti: gross number of listeners in Päijät-Häme  
64 000

Local newspapers:

- Uusi Lahti: Lahti, part of Hollola and Orimattila (comes out on Wednesdays), 49 000 readers.
- Seutu4: Hollolan Sanomat, Orimattilan Aluelehti, Päijät-Häme ja Nastola-lehti, regional household distributions (comes out on Wednesdays), 48 000 readers

Look for the contact persons: [www.mediataloesa.fi](http://www.mediataloesa.fi)

# SIBELIUS HALLS MAIN HALL TECHNICAL INFORMATIONS

Technology included in the hall rental.

## PA-SPEAKERS / MAINHALL

	Meyer Sound
18	L-R Mélodie line array, flown
4	L-R HP500 sub, flown
2	UPQ front fill, on stage
2	L-R SUB HP700, on stage
4	L-R UPJ fill, on balconies
2	L-R UPJ fill, under balconies
2	MM4 Center front fill, on stage

## MAINHALL'S FRONTLIGHTS

12	Profile 1 kW Selecon Pacific 5,5°-13°
6	Profile 1 kW Selecon Pacific 12°-28°
2	Fresnel 2 kW DeSisti Monet
16	Par 64 500 w

## OTHERS

4	Hoist 500 kg	Can be moved on the fixed rails of Main Hall.
	Molton-background fabric	6 m high, 17 m wide when hanging

In addition, there is a lot of rentable technology and equipment in Sibelius Hall. Ask for a price list and offer. Contacts can be found on the page 12.

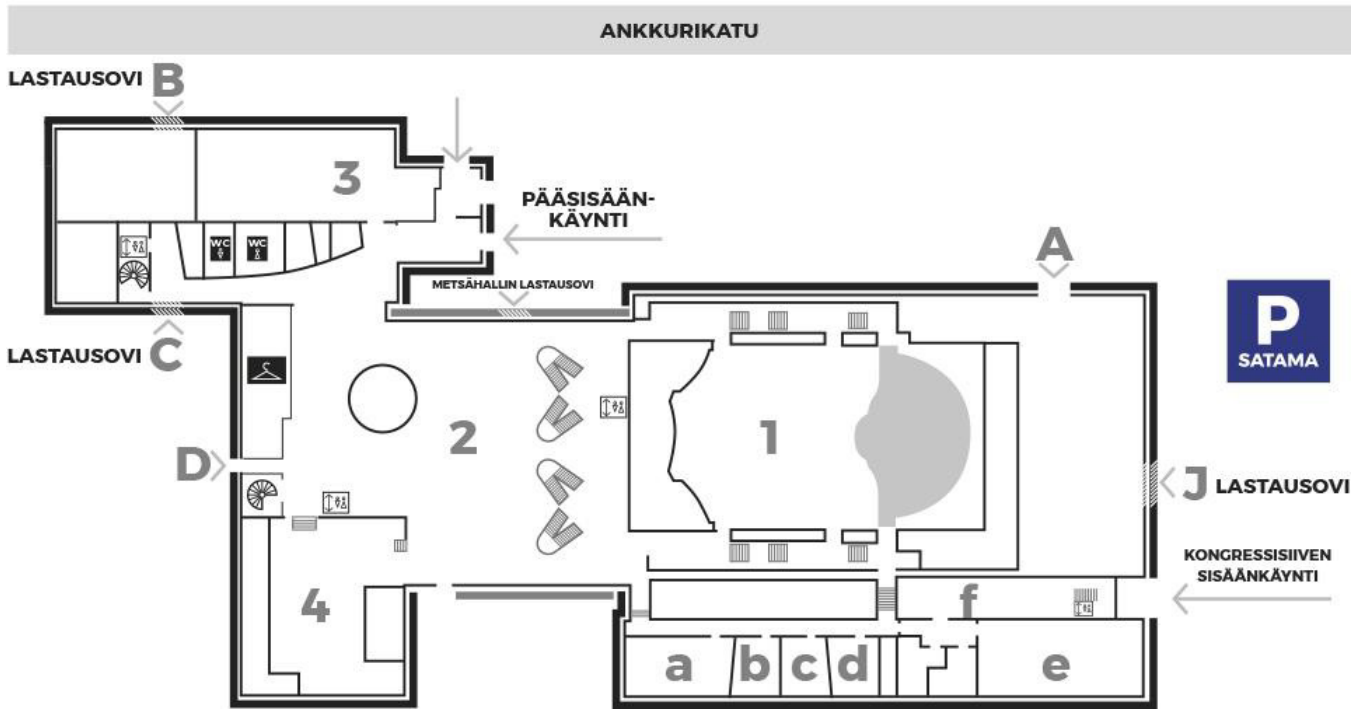
## DRESSING ROOMS

On the side of the stage there is five dressing rooms, and all of them have a shower and WC. There is also a foyer behind the stage that can be used by the performers.

## PRODUCT SALES

Product sale happens in Forest Hall. Forest Hall can be accessed from the loading bay through the echo chamber. Product transport can happen through the main doors, or through the side doors of Forest Hall that are located on the side of Ankkurikatu. (look layout).

# SIBELIUS HALL DOORS



1 = Main Hall

2 = Forest Hall

3 = Carpenter's Workshop

4 = Restaurant Lastu

a = Haapa-cabinet

b = Honka- cabinet

c = Pihlaja- cabinet

d = Koivu- cabinet

e = Kuusi- cabinet

f = Metsänhaltija

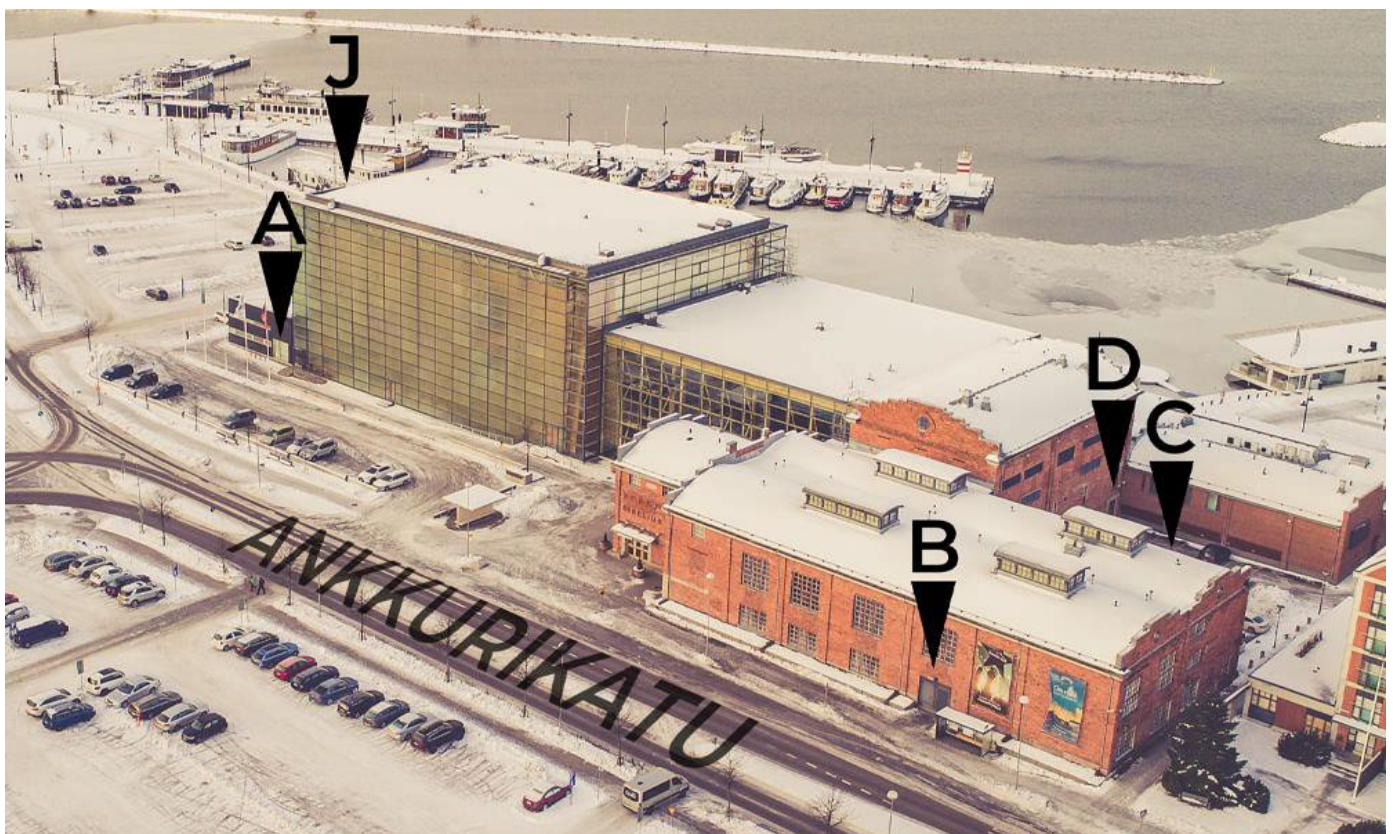
A = Artist door / Main Hall

B = Loading Door / Finlandia-club, Carpenter's Hall, Carpenter's Workshop

C = Loading Door / Carpenter's Hall

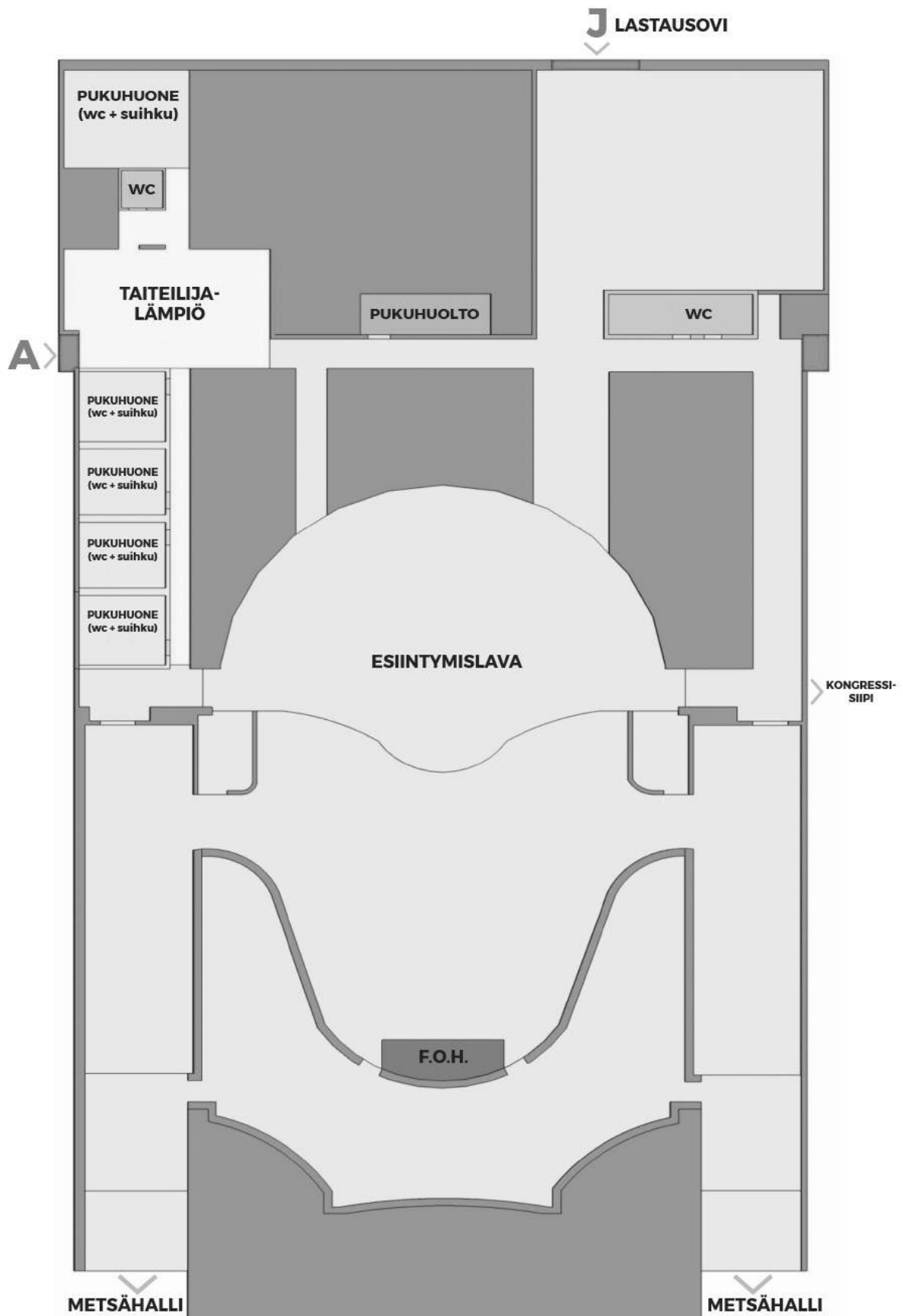
D = Staff Door

J = Loading Door / Main Hall

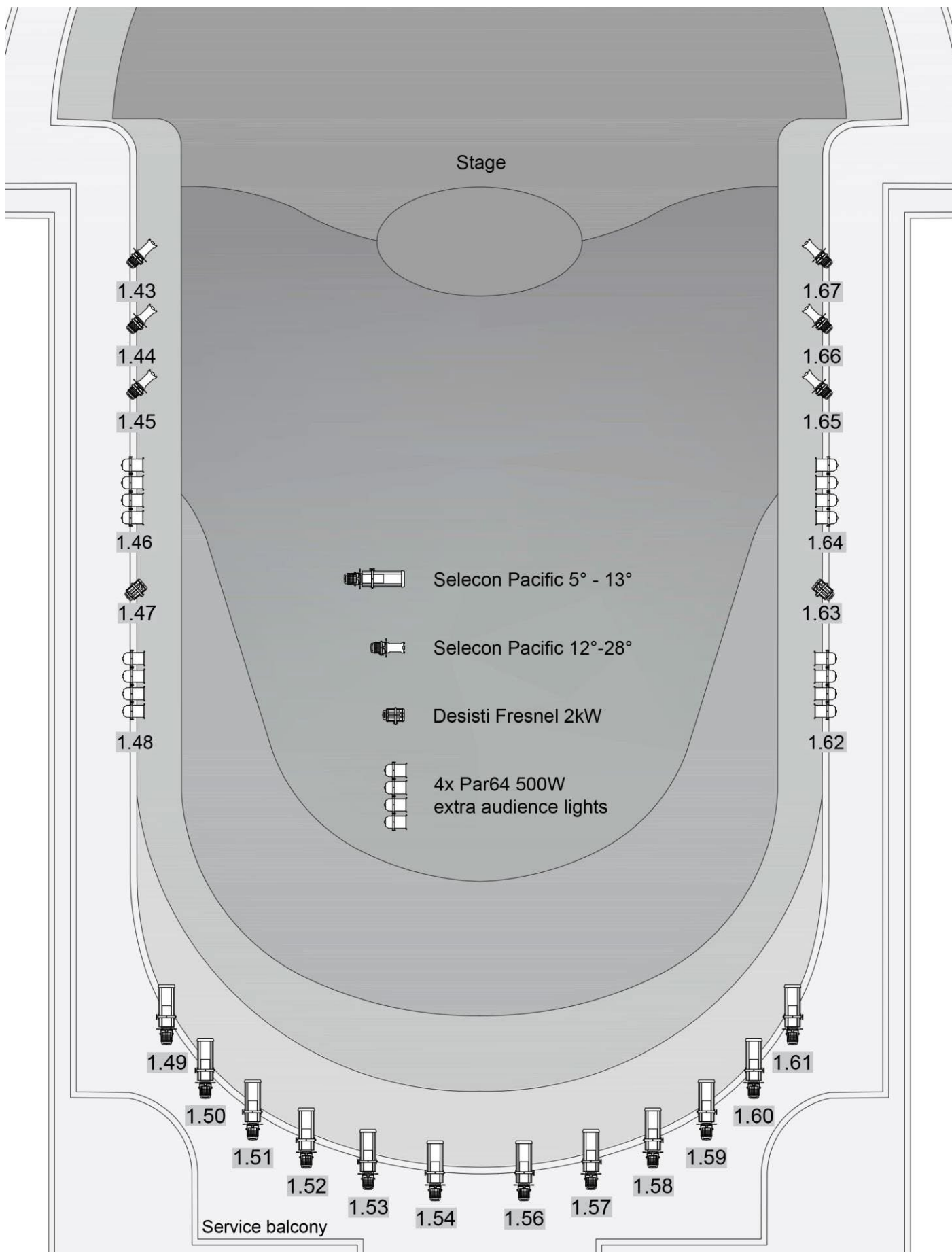


# ARTIST PREMISES

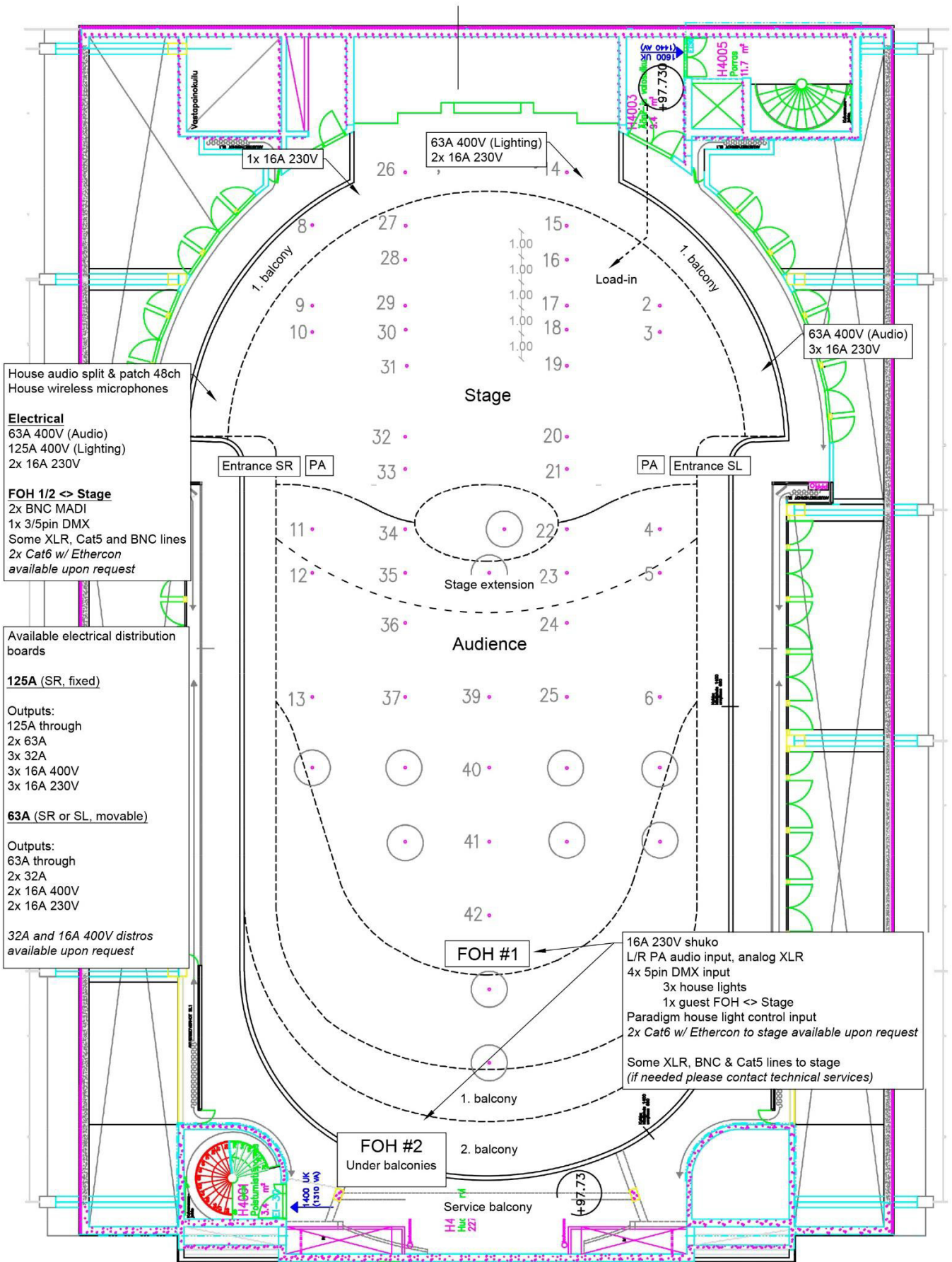
Entrance from the side of Ankkurikatu, A-door and J-loading door



# FRONT LIGHTS / TECHNICAL LOFT 4. floor – DMX-MAP







House audio split & patch 48ch  
House wireless microphones

**Electrical**  
63A 400V (Audio)  
125A 400V (Lighting)  
2x 16A 230V

**FOH 1/2 <-> Stage**  
2x BNC MADI  
1x 3/5pin DMX  
Some XLR, Cat5 and BNC lines  
2x Cat6 w/ Ethercon  
available upon request

Available electrical distribution  
boards

**125A (SR, fixed)**

Outputs:  
125A through  
2x 63A  
3x 32A  
3x 16A 400V  
3x 16A 230V

**63A (SR or SL, movable)**

Outputs:  
63A through  
2x 32A  
2x 16A 400V  
2x 16A 230V

32A and 16A 400V distros  
available upon request

16A 230V shuko  
L/R PA audio input, analog XLR  
4x 5pin DMX input  
3x house lights  
1x guest FOH <-> Stage  
Paradigm house light control input  
2x Cat6 w/ Ethercon to stage available upon request

Some XLR, BNC & Cat5 lines to stage  
(if needed please contact technical services)



STAGE SETTING: EXAMPLE 1



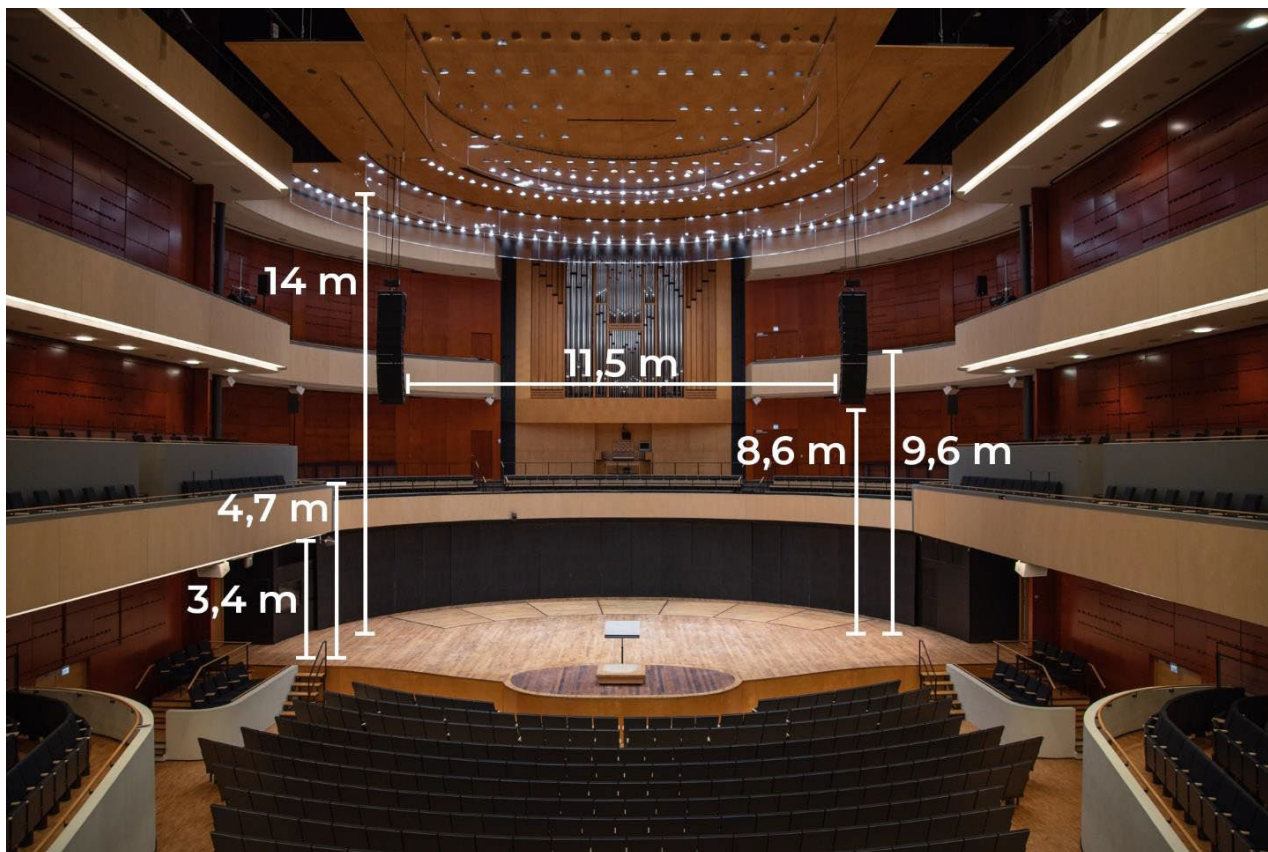


## STAGE SETTING: EXAMPLE 2





## STAGE MEASUREMENTS



Stage width: 20 m  
Stage depth: 14,5 m  
Height: 14 m

Choir lofts railing upper side: 4,7 m  
2. loft railing upper side: 9,6 m  
From the back wall of the stage to  
back of the hall 34,4 m  
From the front of the stage to F.O.H.-  
spot: 16 m  
From the stage to PA's bottom 8,6 m

The stage can be expanded from the front by taking out the first-row seats so there will be more depth in it.

## CATERING

If wanted, there can be restaurant services in artist spaces. Be in contact to Sibelius Hall's restaurateur [sibeliustalo@restel.fi](mailto:sibeliustalo@restel.fi) or phone 020 762 4864. It is forbidden to enjoy own servings and alcohol drinks in Sibelius Hall.

## CONTACTS

**Matti Pöllänen**, Program Manager  
p. 044 482 6059

**Mika Kavasvuo**, Executive Producer  
p. 050 398 5806

**Leo Lehtonen**, Producer  
p. 044 716 1395

**Porters**  
p. 050 398 5803

**Ilkka Siitari**, Marketing Planner  
p. 044 416 3184

Emails are in form of [firstname.lastname@eventumlahti.fi](mailto:firstname.lastname@eventumlahti.fi)

Ankkurikatu 7  
15140 Lahti  
Business ID: 3413274-9